

WP
SERIES 系列

Wall paper LED panel 墙纸显示屏



WP SERIES

- Ultra slim, wall-mounted installation
- 90° corner design
- Dual backup power and signal system optional
- Front access
- Vertical and horizontal panel installation available
- 超薄设计，贴墙安装
- 90°转角
- 电源及信号双备份可选
- 前维护
- 箱体可竖向和横向安装



前维护
Front Access



轻
LightWeight



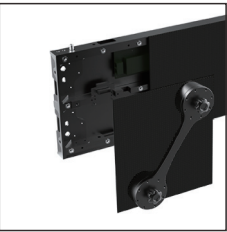
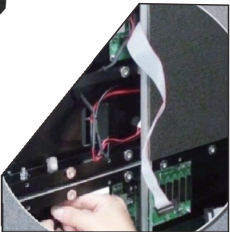
高清小间距
High Definition



薄
Ultra Slim

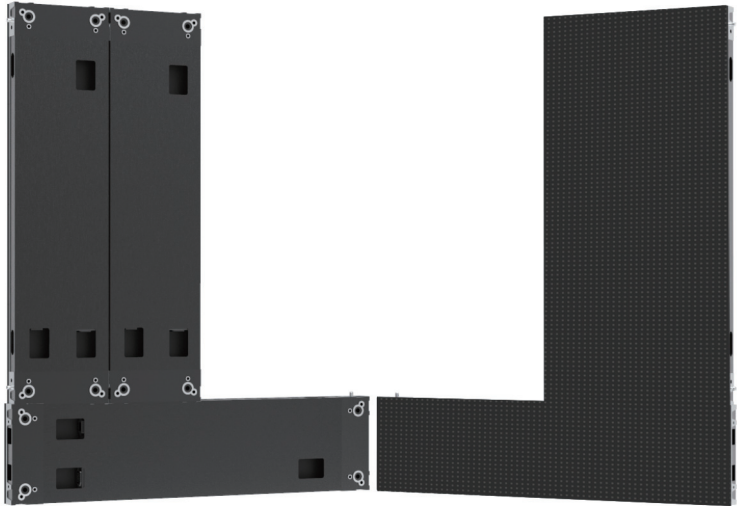


静音
Noise Free



CE ETL RoHS EMC

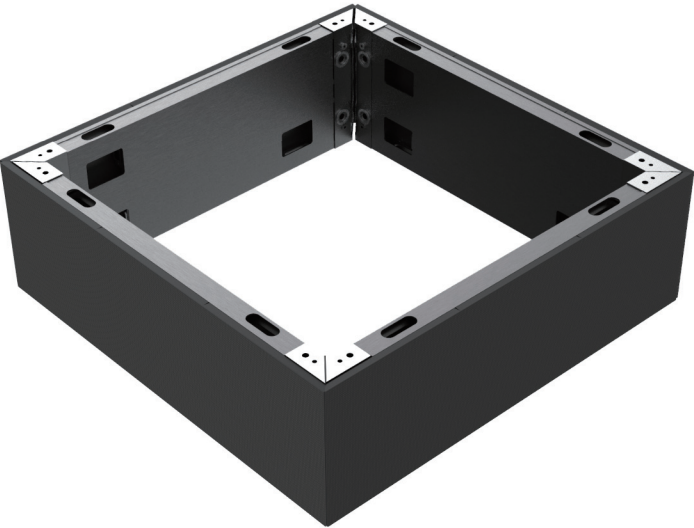
FEATURES 特性



Vertical & horizontal installation 竖向&横向安装



Customized width optional 箱体宽度可定制



Corner panel assembly 转角箱体

SPECIFICATIONS 详细参数

参数	Parameter	Unit	WP2.6	WP2.9	WP3.9	WP4.8
像素间距	Pixel pitch	mm	2.604	2.976	3.906	4.807
亮度	Brightness	nits	1000	1000	1000	1100
像素组成	Pixel configuration	R/G/B	SMD 3 in 1			
色温	Colour temperature	deg.K	6500			
水平视角	Viewing angle-Horizontal (50% brightness)	deg.	160 （+80/-80）			
垂直视角	Viewing angle-Vertical (50% brightness)	deg.	140 （+70/-70）			
推荐最小观看距离	Recommended minimum viewing distance	m	2.6	2.9	3.9	4.8
箱体宽度	Panel width	mm	1000			
箱体高度	Panel height	mm	250			
箱体厚度	Panel depth	mm	40			
箱体面积	Panel area	m²	0.25			
箱体材料	Panel material		Die-casting Aluminum + Aluminum （压铸铝+型材铝）			
箱体重量	Panel weight	Kg	6.7			
防护等级（前/后）	Ingress protection (front/rear)	IP	30/30			
箱体像素矩阵	Pixel matrix per panel		384*96	336*84	256*64	208*52
亮度控制	Brightness control		255			
数字处理	Digital processing	bit	14			
视屏帧频	Frame rate	Hertz	50~60			
视频刷新	Display refresh rate	Hertz	2880		1920	
输入电压	Input voltage	VAC	100~240			
输入电源频率	Input power frequency	Hertz	50~60			
输入最大功耗	Input power (Max.)	W/m²	420	580	550	400
输入额定功耗	Input power (Avg.)	W/m²	147	200	193	140
工作环境	Operating temperature range	deg.C	-10~+40			
显示屏使用寿命	Lifetime (50% brightness)	Hour	100,000			